

# INSIDE Samford

A newsletter for faculty, staff and friends of Samford University • June/July 2015

## Welcome Our New Students

More than 800 new freshmen and transfer students will be on campus for orientation during June. Please welcome them with a smile.

### Quotable

Samford faculty shared the following thoughts as speakers during commencement weekend.

**Brad Creed**, provost and executive vice president, to the Howard College of Arts and Sciences commencement

"Grateful people sit in the shade of trees they did not plant. Great people plant shade trees they will never sit under—but others will. . . . It is now time for you who sit in the shade of trees to plant some trees. It is time to do something productive that will bless others even if you don't get credit for it or reap the benefits."

**Nena Sanders**, vice provost, College of Health Sciences, to the CHS commencement

"By pursuing your calling, you will go on to more than just a career—you will create a life rich in opportunity and fulfillment knowing you make a difference in the life of each person you touch."

**Woodrow Hartzog**, associate professor of law, to the Cumberland School of Law commencement

He said Cumberland lawyers are relentless, they know life outside the law, they take themselves just seriously enough, they are loyal and they are in the people business. These traits "make us who we are," he told the graduates. "I hope you can see them in yourself as well, and draw upon them as you start your legal career." ■



Samford employees enjoy the staff picnic May 21 in Ben Brown Plaza.

## Trustees Approve Five New Degree Programs

Samford University's board of Trustees approved five new degree programs during its regular spring meeting April 28. They include the following:

**Bachelor of Science in Public Health**, a new major with a "broad and rigorous sequence" of courses in public health and the ability to implement a health project, health communication skills and an understanding of health systems.

**Master of Public Health with a Global Health Concentration**, designed for students who want to pursue careers in global public health. Provost Brad Creed noted that this is a new concentration within a previously approved degree program.

**Master of Science in Design Studies**, an online program for 24 months of advanced study with an emphasis on design, research and teaching. This program is housed in Samford's Department of Interior Architecture.

**Bachelor of Arts in Law, Politics and Society**, an interdisciplinary concentration focused on the role of law in local, national and international society and intended for students interested in law-related fields.

**Bachelor of Science in Criminal Justice**, a new degree program in the university's Career and Continued Studies for students interested in the administration of public law enforcement and corrections agencies. ■

## NSF Funds Samford Study for \$329,774

The National Science Foundation has renewed funding for a project proposed by Samford biological and environmental sciences professor Malia Fincher. Samford's Howard College of Arts and Sciences will receive approximately \$329,774 over the next three years for the Research Experience for Undergraduates (REU) program.

The nine-week REU program, led by Fincher with co-principal investigator Betsy Dobbins, unites students and faculty mentors from the fields of biology, chemistry, geography and pharmaceutical sciences to work collaboratively on projects in Alabama's Oak Mountain State Park. REU participants perform full-time research and participate in weekly workshops on professional skills, career opportunities and the graduate school application process.

Dobbins is Paul N. Propst Professor of Natural Sciences at Samford.

The REU program is open to U.S. citizens who are currently college sophomores or juniors. Participants are selected based on academic record, professional goals and potential for outstanding research. The program brings together outstanding undergraduate students who have limited opportunities to participate in research at their home institutions and students from under-represented minority groups for a summer of study at Samford and Oak Mountain State Park, with its

NSF cont. on page 4



## Out & About

**Jim Angel** (Kinesiology) spoke to the student leadership of the Baptist Campus Ministry at Auburn University—Montgomery on the subject of Christian leadership. He was invited to speak by Lee Dymond, campus director at AUM and a 1992 Samford graduate.

**Kristin Bakkegard** (Biological and Environmental Sciences) wrote the article "Red Hills Salamander" recently published in the *Encyclopedia of Alabama* (EOA), a free, online reference resource on Alabama's history, culture, geography and natural environment. The Alabama Humanities Foundation holds the copyright to EOA's original content in trust for the citizens of Alabama.

**Kim Benner** (Pharmacy) presented a continuing education program on "Pediatric Shock" to Children's Hospital of Alabama pharmacists and technicians April 8 and April 15.

**Marshall Cates** (Pharmacy) received an Innovations in Teaching Award from the American Association of Colleges of Pharmacy. Cates and **Tom Woolley** (Business) presented a poster, "Pharmacy Students' Attitudes toward Mental Illness Are Unaffected by Participation in a Psychiatric Pharmacy Advanced

Pharmacy Practice Experience," at the College of Psychiatric and Neurologic Pharmacists annual meeting in Tampa, Florida, April 20. They also presented, with **P. J. Hughes** and **A. C. Thomas** (Pharmacy), "Effects of a Focused Continuing Education Program on Pharmacists' Attitudes toward Suicide Prevention."

**Candia Cole** (Kinesiology) led a cardio kickboxing class May 12 for The Arc of Jefferson County to support Team Arc of Jefferson County in the Special Olympics.

**Theresa Davidson** (Sociology) and **Lee Farquhar** (Journalism and Mass Communication) had a coauthored manuscript titled, "Tolerance on Facebook: Exploring Network Diversity and Social Distance," accepted for publication in the *Journal of New Media and Culture*.

**Betsy Dobbins, Kristin Bakkegard, David Johnson** (Biological and Environmental Sciences) and **Riley T. Lovejoy** (Ph.D. graduate student at University of Alabama and 2013 summer undergraduate researcher in Samford's biology department under an NSF-funded REU program directed by **Betsy Dobbins** and **Malia Fincher**, Biology) were major presenters at the Undergraduate Research symposium held as part of the 92nd annual meeting of the Alabama Academy of Science at the University of West Alabama, Livingston, March 11-13.

**Steve Donaldson** (Mathematics and Computer Science), representing the Center for Science and Religion, gave a presentation entitled "Science, Religion and Christian Mission" at the SALT Apologetics Seminar held at Dawson Memorial Baptist Church, Homewood, April 25.

**Clif Eason** (Business) published "Reward Me, Charity or Both? The Impact of Fees and Benefits in Loyalty Programs" in vol. 25 of the *Journal of Retailing and Consumer Success*. **Mark Bing** (University of Mississippi) and **Jack Smothers** (University of Southern Indiana) were coauthors.



**Bakkegard**



**Finn**



**Frost**



**Searby**

**David Finn** (Education) presented "Spotlight on China: Selected Lesson Plans and Resources for Teachers" in a March 7 program for Alabama teachers sponsored by Samford and Birmingham International Center at Samford. The plans were collected/written by **Mandy Hilsmier** and **Erin Gilchrist** (Education) and students **S. Buscher, R. Celia, E. Craig, A. Lane, S. Rogers, H. Snell** and **O. Yancey**. The lesson plans are being shared with teachers across the state to heighten student awareness about China. Finn also provided a series of special education workshops across Lebanon April 24 as part of the 2015 National Day for Special Education in Beirut, Lebanon.

**Donna Fitch** (Marketing and Communication) published *Five Signs It's Time to Break Up with Your Website*, available for Kindle exclusively on Amazon. It's a light-hearted look at website redesign, written for nontechnic people.

**Ginger Frost** (University Research Professor) gave a paper titled "Such a Poor Finish": Gender, Crime, and World War I Veterans, 1918-23" at a three-day symposium on Gender and Warfare in the Twentieth Century at the University of Minneapolis May 15-17. Frost was one of 16 scholars across the country invited to speak and share research at the symposium, sponsored by the journal *Gender and History*.

**Greg Gorman** (Pharmacy) with **M. H. Taylor, A. Sandler, W. J. Urba, A. P. Omuro** and **R. A. Karmali** published "Effect of Carboxyamidotriazole Orotate, a Modulator of Calcium-Dependent Signaling Pathways, on Advanced Solid Tumors" in *Journal of Cancer Therapy*, 2015, 6, 322-333.

**Michael Hogue** (Pharmacy) gave a presentation on Streptococcus pneumoniae infection to the University of Tennessee Department of Pulmonology April 16.

**David Johnson** (Biological and Environmental Sciences) mentored research by three students, **Lina Tran** (Tulane University), and **Elizabeth Hayes** and **Keith Whiteneck** (Samford), whose work resulted in a poster presented by Tran at the 76th annual meeting of the Association of Southeastern Biologists in Chattanooga, Tennessee, April 1-4. The poster, coauthored by the students, was entitled "Using Sanger and next generation sequencing to investigate the macro- and microbiota of a pond connected to Oak Mountain Lake, Shelby County, AL." Tran was a 2014 summer undergraduate researcher in Samford's Department of Biological and Environmental Sciences under an NSF-funded REU program directed by **Betsy Dobbins** and **Malia Fincher** (Biology) entitled "Interdisciplinary research in a diverse Appalachian ridge and valley ecosystem."

**Brickey LeQuire** (Political Science) moderated a roundtable on Denis Diderot's *A Supplement to Bougainville's "Voyage"* at the second annual Colloquium of the Memmius Society in Cold Spring, New York.

**Erin Mauldin** (History) will chair and comment on a panel, "Controlling Unwanted Species," for the Agricultural History Society annual meeting in Lexington, Kentucky, June 2-6. She also will present a paper at the meeting, "A Nakedness of Livestock": Hog Cholera, the Disappearing Commons, and the Question of Self-Sufficiency on Southern Farms,"

*Out & About* cont. on page 4

**INSIDE**  
*Samford*

Bill Nunnely  
*Editor*

Janica York Carter  
*Director of Creative Operations*

Monica Washington  
*Senior Graphic Designer*

Julie Beckwith  
*Editorial Assistant*

205-726-2800  
wanunnel@samford.edu  
©2015 Samford University

**Deadline for next issue:**  
**July 17, 2015**

Produced by Samford Office of Marketing and Communication





## June Calendar

(Birthdays are listed in red.)

### Monday, June 1

David Byland, Kevin Kozak, Kelly Ross-Davis, Shelley Vail-Smith  
First day of classes, Summer 1 session  
Bulldog Days orientation session 1

### Tuesday, June 2

Joe Adams, James Hubbs  
Bulldog Days orientation session 1

### Wednesday, June 3

Amanda Chambers, Michael Huebner

### Thursday, June 4

David Downing (ret.), Frances Owens (ret.), David Roberts (ret.)

### Friday, June 5

Heather Averett, Kara Chism, Lenita Rice, Kim Whatley, Sharon Young (ret.)  
Athletic Training Summer Clinic, grades 9–12, through June 7

### Saturday, June 6

Pamela Bartz, Andy Milstead, Thom Thibeault  
Institute for Genealogy and Historical Research, through June 10

### Sunday, June 7

Jane Bailey, Carl Beckwith, Justin Chandler, Rusty Johnson, Leslie Jones, Jennings Marshall, Teri Nash, Dedra Phillips, Mike Putman  
Piano and Chamber Music Institute, grades 7–12, through June 13

### Monday, June 8

David Dedo, Nancy Hicks (ret.), Mike Howell (ret.), Doris Miller (ret.), Andy Parrish, Ryan Rainer, Metta Faye Street (ret.), Parham Williams (ret.)  
Bulldog Days orientation session 2  
Imagine! Summer Camp, grades K–12, through June 12

### Tuesday, June 9

Scott Camp, John Ott, Linda Swann (ret.)  
Bulldog Days orientation session 2

### Wednesday, June 10

Mark Baggett, Allyson Maddox

### Thursday, June 11

Beth Ashmore, Joey Duke, Demontrae Thurman

### Friday, June 12

Kristin Bakkegard, Greg Jeane (ret.), John Killinger (ret.), Catherine Lawrence, Geoff Wright  
Bulldog Days transfer student orientation

### Saturday, June 13

Cameron Collins, Alan Hargrave, Mark Mathieu (ret.), Gary Pate

### Sunday, June 14

Bill Cleveland, Brad Felton, Michael Fiedler, Erin Mauldin, Sam Shade, Linda Vandiver  
Alabama Governor's School, rising high

school seniors nominated by their high school counselors, through June 26

### Monday, June 15

Jennifer Cooke, Danielle Cruthirds, Theo Greene, Ken Stoltzfus  
Bulldog Days orientation session 3  
Imagine! Summer Camp, grades K–12, through June 19  
Adventures in Music Camp (Piano), grades 1–12, through June 19

### Tuesday, June 16

Jongwha Chang, Abby Cohron, Ernie Gates, Brooke Karr, Erin Killingsworth, Ron Shinn, Jim Williams  
Bulldog Days orientation session 3

### Wednesday, June 17

Stephen Inman, Theresa Kanute, John Lundeen, Scott McGinnis, Gena Sullivan, Glenn McWaters (ret.)

### Thursday, June 18

Kevin Blackwell, Bob David (ret.), Brian Kennedy, Summer Robinette, David Weigel  
Bulldog Days orientation session 4

### Friday, June 19

Ann Armstrong (ret.), Laura Beason, Bailey Chambers, David Little, Lucy Phillips  
Bulldog Days orientation session 4

### Saturday, June 20

Dawn Carre, Jane Leask

### Sunday, June 21

Connie Cox, Joe Dean (ret.), Nathan Kirkpatrick, Laine Williams, Charles Workman (ret.)  
Bulldog Pharmacy Camp, rising high school juniors and seniors and college freshmen, through June 26  
Summer Debate Institute, grades 9–12, through July 4

### Monday, June 22

Bill Belski, Ed Cherry, Lori Coward, Chris Gillespie (ret.), Sallie White, Charles Workman  
Academy Art Summer Camp, ages 7–11, through June 26

### Tuesday, June 23

Paige Acker, Erin Carroll, Joel Davis, Annsley DeGaris, Jeffrey Flaniken, Michael Joiner, Nevada Spurlock

### Wednesday, June 24

Joanna Bradley, Diane Dunning, Lori Strand, Joe Zellner  
J.D. Calling, grades 11–12, through June 27  
M.D. Calling, grades 11–12, through June 27

### Thursday, June 25

Erika Cretton-Scott, Mark DeVine, Robert Maddox

### Friday, June 26

Emily Allee, Martha Alverson (ret.), Jackie Davis (ret.), Richard Bierman, Shaphan Helms

### Saturday, June 27

James Carlson, Janet Carr, Betty Duncan (ret.), Stacy Gay, Jay Holloway, Allison Jackson, Melissa Lumpkin, James McLemore, Matt Scott, Donald Sloan (ret.), Alice Shelburne, Georgia Traylor (ret.)

### Sunday, June 28

Sara Eddings (ret.), Thomas Hines (ret.), Jeffrey Powell

Minority Youth Science Academy, grades 9–12, through July 1

### Monday, June 29

Grace Christian (ret.), Marie Holley (ret.), Peter Neuberger (ret.), Willa Powell (ret.), Douglas Webster, Teresa Wilborn (ret.)  
Animate intergenerational worship workshop, grades 8–12, through July 3

### Tuesday, June 30

Cyndi Cortes, Elizabeth Emmons, Jalete Joseph-Nelms, Phil Min, Ami Shell, Beth Stewart

## July Calendar

### Wednesday, July 1

Amy Cates Lyle, Betty White (ret.)

### Thursday July 2

Abbey Holthaus, Yasuhiko Oyama, Bruce Winter  
Classes end Summer 1 session

### Friday, July 3

Ronda Bush, Chris Davis, Penny Marler (ret.), Tamara Shadinger  
Independence Day holiday, university closed

### Saturday, July 4

David Chapman, Pat Dudley, India Gold, Bernice Harville (ret.), Sam Powell, Tommy Rohling  
Independence Day

### Sunday, July 5

David Bains, Sandra Bright, Carol Koch, Jeff Koonce, Quincy Price, Ken Van Sise (ret.), Carla Jean Whitley  
Great Ideas Summer Institute, rising high school juniors and seniors, through July 10  
Quantitative Finance Summer Institute, rising high school juniors and seniors, through July 10

### Monday, July 6

Elliott Dansby, Grant Gentry, Jackie Lockhart, Lois Roberson (ret.)  
Final Exam Day Summer 1 session  
Adventures in Music Camp (Piano and Voice), grades 1–12, through July 10

### Tuesday, July 7

Ken Brazil (ret.), Maisha Freeman, Janis La Velle, Chris Smith  
First day of classes, Summer 2 session

### Wednesday, July 8

Gladys Casanova, Lee Ennis, Jonathan Farris, Sandra Hines, Eleanor Ousley (ret.), Carol Ratcliffe, LeeAnn Reynolds, Iva Thomas (ret.)

### Thursday, July 9

Ed Felton (ret.), Bruce Hoven, Viola Jackson (ret.), Teresa Proctor, Barbara Thorn (ret.)

### Friday, July 10

Shannon Ammons, Deborah Chiles, Amy Fineburg, Robert Moore, Jeanette Rader (ret.), Lisa Vines

### Saturday, July 11

Authur Fluker, Connie Macon, Elizabeth McIntyre, Danny Smith

### Sunday, July 12

Janica Carter, Tyler Landolt, Cathy Scott, Michael Wilson  
Great Ideas Summer Institute, rising high school juniors and seniors, through July 17

Quantitative Finance Summer Institute, rising high school juniors and seniors, through July 17

### Monday, July 13

Ryan Beach, Russ Callaway, Rosemary Carnley (ret.), Joyce Cox (ret.), Harold Goss, Michelle Moultrie, Moya Nordlund, Brenda Ridgeway  
All Aboard for Music Camp, ages 3–6, through July 17

### Tuesday, July 14

Susie Yarbrough

### Wednesday, July 15

Lowell Broom, Rod Davis (ret.), Elsie Ray (ret.)

### Thursday, July 16

Todd Cotton, Angela Flaniken, Harold Hunt (ret.)

### Friday, July 17

Bruce Atkinson, Sonya Davis, Vince Edmonds, Lisa Gurley, Keisha Howard, Cam Sabo, Glynnis Warner, Sara Williams

### Saturday, July 18

Nancy Curry, Susan Doyle, Bo Kerr, Shirley McRae, Robin Roberts (ret.)

### Sunday, July 19

Jeff Dance, Karen Hubbard (ret.), Kevin Maddox, William Rosenblum

### Monday, July 20

Tammy Dunn, Sandra Fox (ret.), Roshanda Holston, Debbie McGrady (ret.), Adam Smith

### Tuesday, July 21

Betty Caterinichia (ret.), Mark Elliott (ret.)

### Thursday, July 23

Kristi Dutton, Monte Erwin, David Glenn, Terry McCarthy, Becky Morgan, Derek Schroeder, Debbie Strickland

### Friday, July 24

Leslie Barineau, Jennifer Coleman, Mike Floyd, David Hogg, Cody Jackson, Darlene Kuhn, Archie Lockamy, Donald Nation

### Saturday, July 25

James Boyette, Tracey Dick, Melanie Henningsen, Kathey Gassner (ret.), Jill Hightower, Caroline Janeway, Candace Lambert, Pat Momenec (ret.)

### Sunday, July 26

Bobby Breed (ret.), Katy Crowson, Michele Haralson, David Luthin, Sara Helms McCarty, Mary McCullough

### Monday, July 27

Linda Ables (ret.), Graham Cole, Lisa Dodd, Greg Laughlin

### Tuesday, July 28

Amy Carr, Robert Hensarling, Leslie Norton, David Pressley, Barbara Shinn, Tom Woolley

### Wednesday, July 29

Teruko Bredemann, Vicki Rochester, Fred Shepherd

### Thursday, July 30

Paul Aucoin (ret.), Hunter Denson, Carly Friedman, Debbie Morrison

### Friday, July 31

Beryl Flurry (ret.), Ronnie Gatreay, Elizabeth Gettys, Jackie Goldstein, Martha Hearn (ret.), Mike Kendrach, Jack Nelson (ret.), Dennis Sansom ■

# Joys & Sorrows

## Congratulations to . . .

- **Lauren McCaghren** (Annual Giving/Alumni Programs) and her husband, **Chris** (Assistant to the President) on the May 6 birth of their daughter, Callen
- **Brad Radice** (Marketing and Communication) and his wife, Carrie, on the May 28 birth of their son, Kevin Christopher

## Sympathy is expressed to . . .

- **Jane Martin** (Nursing) in the April 30 death of her father, Gene Stevenson, of Auburn, Alabama
- **Cristina Almanza** (Marketing and Communication) in the April 9 death of her nephew, Bruno Sanchez, of Torreón, Mexico
- **Terri Robinette** and **Robbie Tucker** (Public Safety) and **Summer Robinette** (Law Library) in the May 3 death of Terri's mother, and Robbie's and Summer's grandmother, Ella Faye Tucker, of Cahaba Heights, Alabama ■

## NSF cont. from page 1

unique Appalachian ridge and valley ecosystem.

Samford applied for this funding after completion of a successful REU program during 2013-14. That program enabled students from 21 colleges in 17 states to study at Samford and perform research at Oak Mountain for a summer. The experience provided "high-quality, intensive research opportunities that hopefully prepared these students to pursue higher study and careers in science," said Fincher.

A total of 14 students from 12 colleges and universities will begin their 2015 summer of study and research in June. Other groups will be scheduled in 2016 and 2017. ■

## Out & About cont. from page 3

which examines the introduction and spread of hog cholera during the Civil War, and how it shaped debates over land use and common property rights in the postbellum era.

**Betty McCullough** (Pharmacy) published "Team Development of the Experiential Program Office and Beyond" in *American Association of Colleges of Pharmacy, Experiential Education Section Newsletter*; Volume 2, Issue 2, Spring 2015.

**Philip Poole** (Marketing and Communication) was the keynote speaker for the Public Relations Association of Mississippi April 30 in Starkville, Mississippi. He discussed professional accreditation and a new certificate credential for young professionals. Poole serves on the Universal Accreditation Board, the governing body for professional accreditation.

**Ken Roxburgh** (Religion) spoke to the Birmingham Branch of the English-Speaking Union on "Christianity in Scotland in the 21st Century" at a meeting in Mountain Brook Club.

**Mark Searby** (Divinity) presented a half-day preconference seminar on "Leading Other Leaders" for the International Mentoring Association annual conference in Phoenix, Arizona, April 22.

**James Strange** (Religion) presented "Village Life in Jesus' Galilee" at First Christian Church in Birmingham April 18.

**Delane Tew** (History) was awarded a Lynn E. May Study Grant from the Southern Baptist Historical Library and Archives in Nashville, Tennessee, in April. ■

# Quinn, Smolin Win Prestigious Fulbright, Lilly Fellows Awards

Two members of the Samford Class of 2015 will pursue graduate study with prestigious awards from the Fulbright and Lilly Fellows programs.

Adam Quinn, an English major and University Fellows honor student, will work toward a master's degree in Anglo-Irish literature and drama at

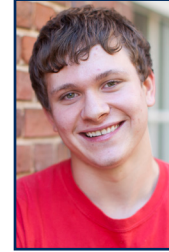


**Adam Quinn**

University College Dublin in Ireland with the help of an Academic Fulbright Award. The Fulbright is the flagship international educational exchange program sponsored by the U.S. government. It is designed to increase mutual understanding between the people of the U.S. and other countries.

Nathan Smolin, a classics major and University Fellows honor student, will pursue a Ph.D. in classics at the University of North Carolina in the Lilly Graduate Fellows Program. The program supports three years of graduate

education for exceptionally well-qualified young graduates of Lilly Networks Schools to become teacher-scholars at church-related colleges and universities in the U.S.



**Nathan Smolin**

He will focus on the intersection between early Christian and Roman ideas of religion, philosophy and culture.

Quinn and Smolin graduated from Samford in May.

The Fulbright Award is Quinn's second. In 2012, he was one of six U.S. students chosen to participate in the Fulbright Commission Summer Institute at Queen's University in Belfast, Ireland. Quinn said he first developed an interest in Irish literature during his earlier Fulbright experience.

Smolin is the second Samford graduate to be chosen for the Lilly Fellows program. Current music faculty member Joel Scott Davis was part of an earlier Lilly Fellows cohort. ■

# Board Appoints 13 New Faculty

The Samford board of trustees appointed the following new faculty members at its regular spring meeting April 28.

**Susanne Finch Burgess**, associate professor of music

**Miriam Gaines**, instructor of nutrition and dietetics

**Ashley George**, assistant professor of communication studies

**Gilaine T. Nettles**, assistant professor of physical therapy

**Michelle Newberry**, instructor of accounting

**Frank Patane**, assistant professor of mathematics

**Delta Derenda Pate**, assistant professor of nursing

**Joseph A. Pederson**, assistant professor of kinesiology

**Kendra L. Rigdon**, assistant professor of biological and environmental sciences

**Mary Anne Sahawneh**, assistant professor of biological and environmental sciences

**Timothy Sutton**, director of writing and communication arts

**Steven Wall**, assistant professor of curriculum and instruction

**Dale Wilger**, assistant professor of chemistry and biochemistry ■