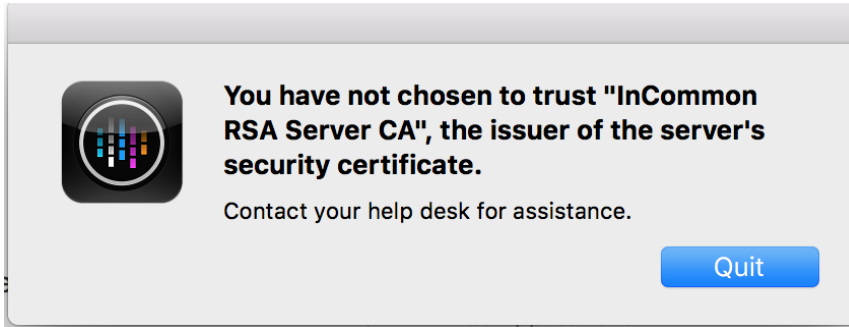
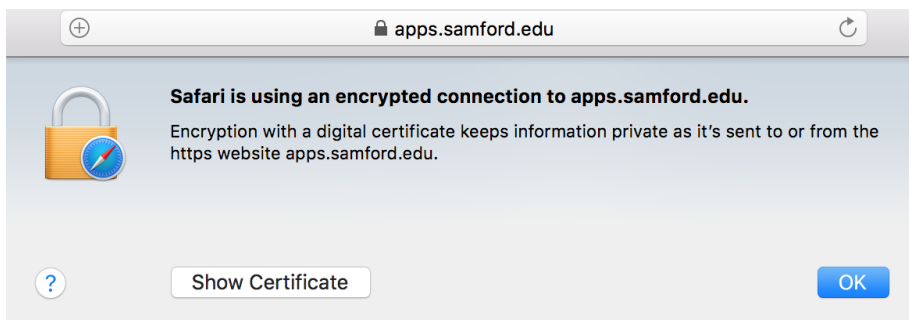


SPSS Certificate Error in Citrix Receiver

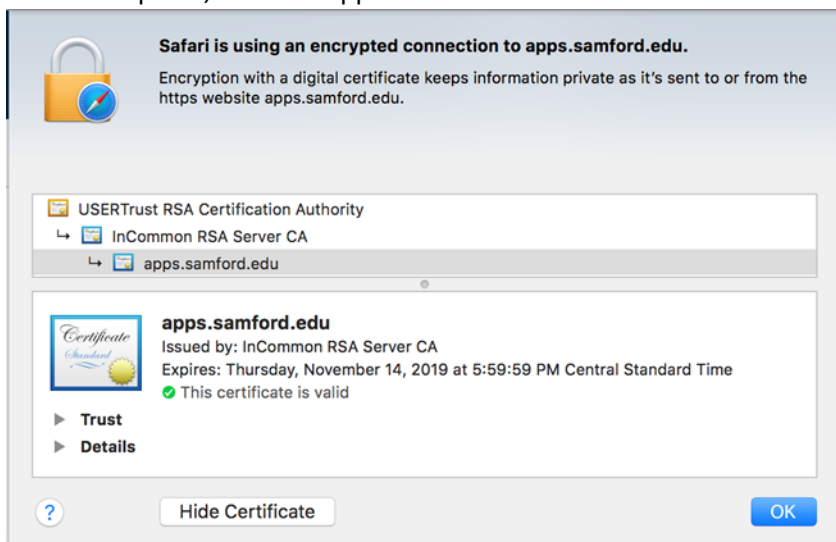
1. If you receive this error when opening SPSS from apps.samford.edu follow the steps below to resolve it.



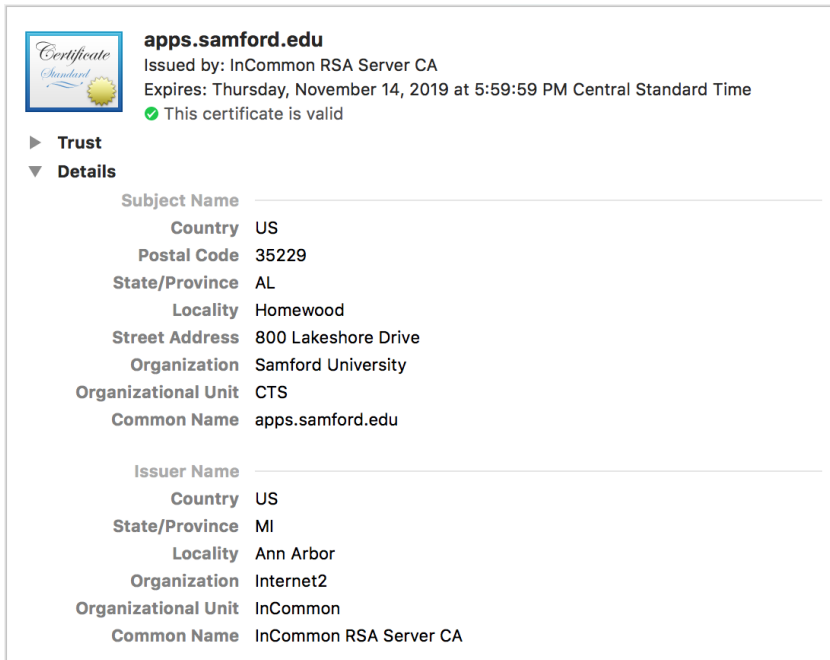
2. Log into <http://apps.samford.edu> in Safari. Click on the lock in the address bar. Click on "Show Certificate" to show details.



3. In the first panel, click on "apps.samford.edu".



4. Click the triangle next to “Details”.



apps.samford.edu
Issued by: InCommon RSA Server CA
Expires: Thursday, November 14, 2019 at 5:59:59 PM Central Standard Time
✔ This certificate is valid

▶ **Trust**
▼ **Details**

Subject Name _____
Country US
Postal Code 35229
State/Province AL
Locality Homewood
Street Address 800 Lakeshore Drive
Organization Samford University
Organizational Unit CTS
Common Name apps.samford.edu

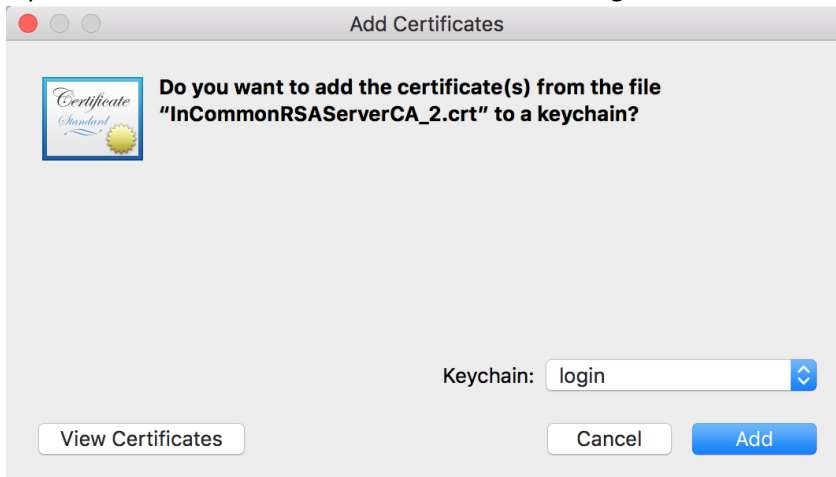
Issuer Name _____
Country US
State/Province MI
Locality Ann Arbor
Organization Internet2
Organizational Unit InCommon
Common Name InCommon RSA Server CA

5. Scroll near the bottom and click on http://crt.usertrust.com/InCommonRSAServerCA_2.crt to download the certificate.


Method #1 CA Issuers (1.3.6.1.5.5.7.48.2)

URI http://crt.usertrust.com/InCommonRSAServerCA_2.crt

6. Open the certificate when it’s finished downloading and click “Add” to add it to Keychain.

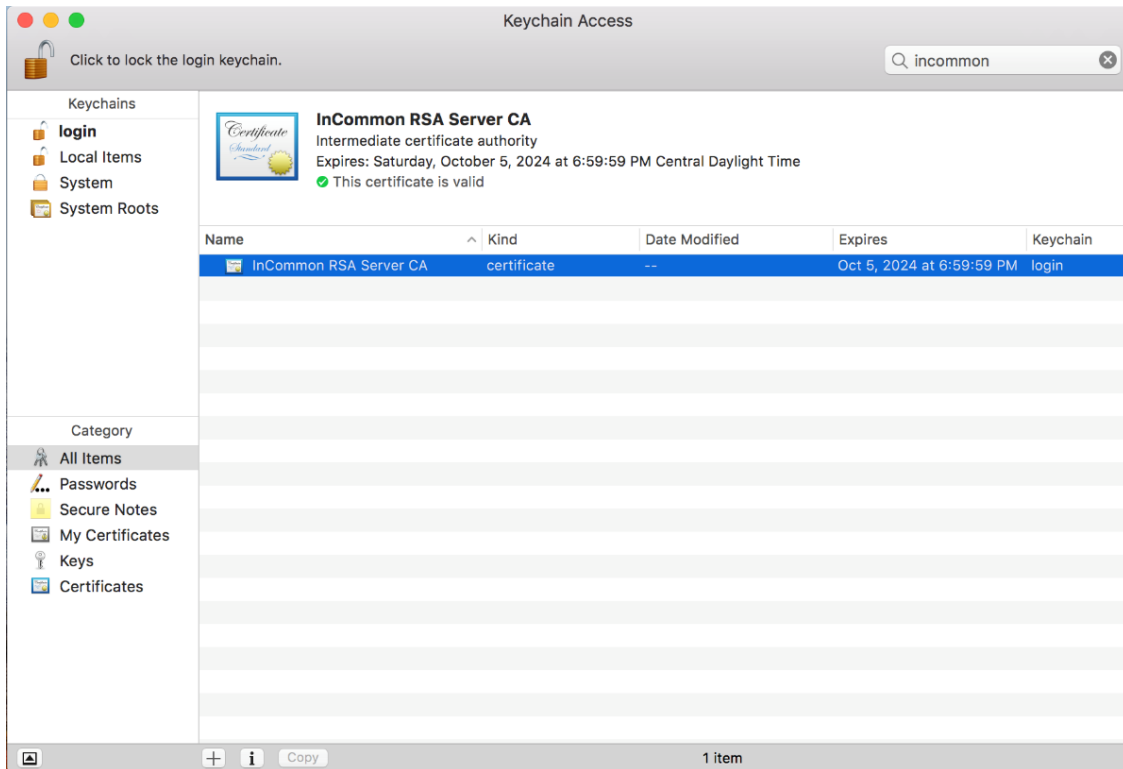


Add Certificates

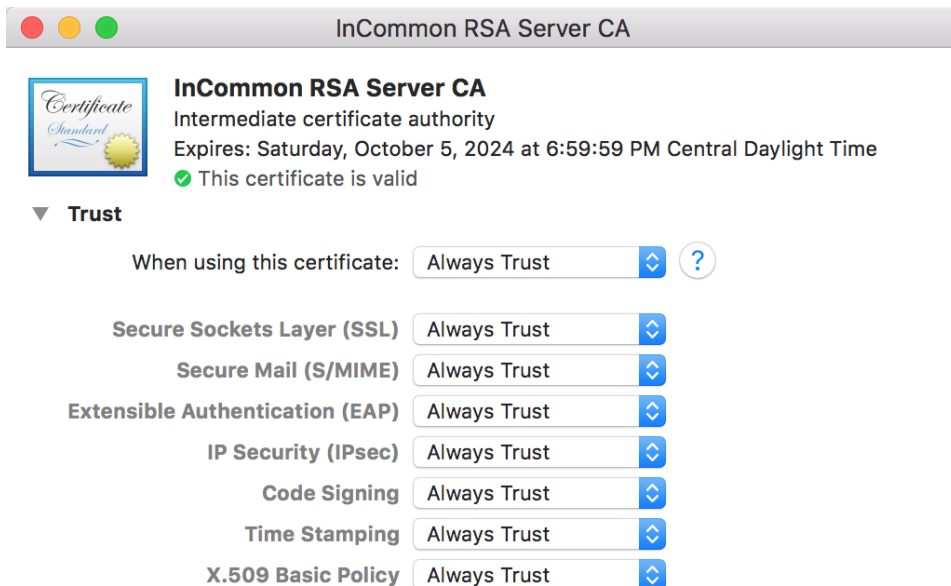
 **Do you want to add the certificate(s) from the file “InCommonRSAServerCA_2.crt” to a keychain?**

Keychain: login

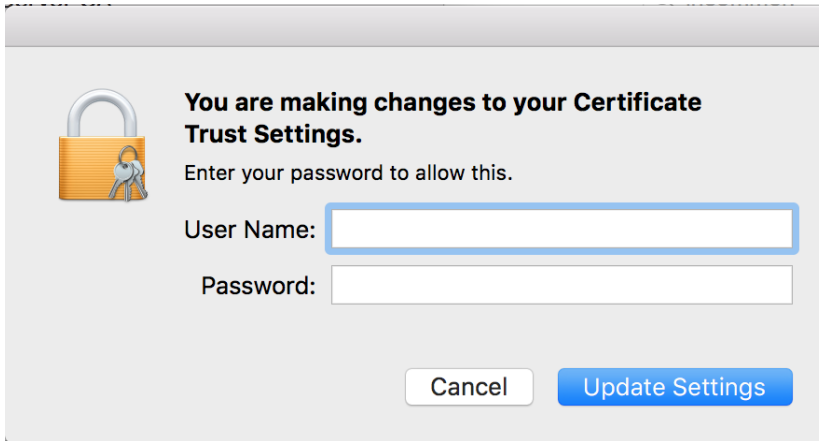
- Open Keychain from the System Preferences and search for “InCommon”. When you find “InCommon RSA Server CA” double click it.



- Click on “Trust” and on the dropdown next to “When using this certificate:” change it to “Always Trust”.



9. Enter your system username and password to save changes.



10. Close Keychain and log back into <https://apps.samford.edu>. Launch the SPSS.